

Manufacturing Industry Overview

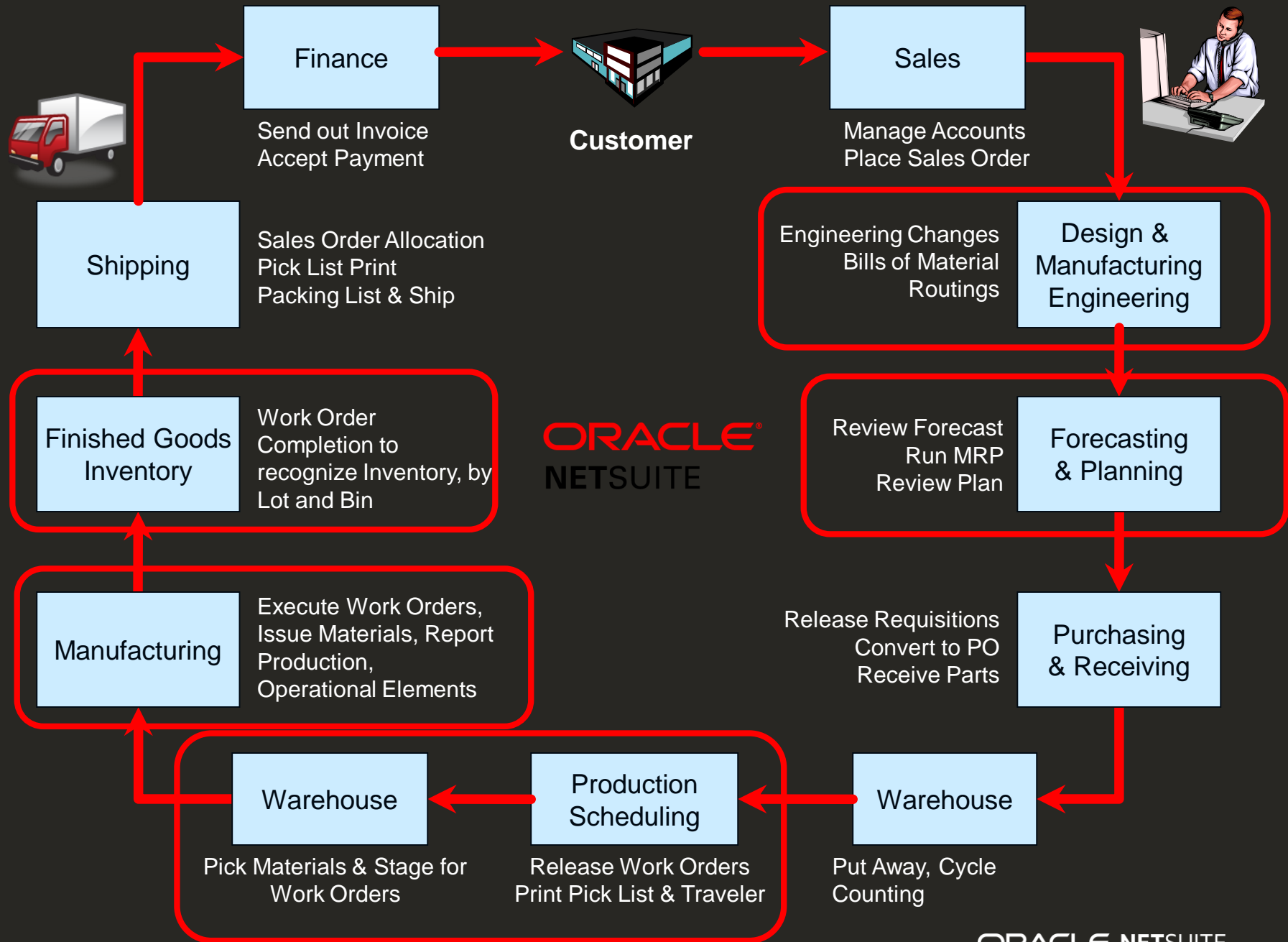


Program agenda

- 1 Overview of Manufacturing industry and terminology
- 2 Describe how an organization in the Manufacturing industry functions and the NetSuite FIT
- 3 NetSuite Levels of Manufacturing

Overview of Manufacturing Industry and Terminology

Basic Manufacturing Flow Example



MANUFACTURING KEY CONCEPTS

- Bill of Materials (BOM)
 - Bill of materials (BOM) is a list of the raw materials, sub-assemblies and components and the quantities of each needed to manufacture an assembly.
- Manufacturing Routing
 - Manufacturing routing is the sequenced manufacturing operations (activities) to be performed. The routing operations specify the department, work center and machine, the time required and the specifications to be referenced. The routing is also used in the standard cost roll up calculations.

MANUFACTURING KEY CONCEPTS

- **Work in Process (WIP)**
 - Work in process includes all unfinished items for products in a production process. These items are not yet completed but either just being fabricated or waiting in a queue for further processing or in a buffer storage. WIP accounting is used to track costs for jobs as they pass through the manufacturing process.
- **Standard Cost**
 - Estimated or predetermined cost of performing an operation or producing a good or service, under normal conditions. Standard costs are used as target-costs (or basis for comparison with the actual costs), and are developed from historical data analysis or from time and motion studies. They almost always vary from actual costs, because every situation has its share of unpredictable factors.*

MANUFACTURING PLANNING CONCEPTS

- Forecasting

- Forecasting is the activity of estimating the quantity of a product or service that consumers will purchase. Demand forecasting involves techniques including both informal methods, such as educated guesses, and quantitative methods, such as the use of historical sales data or current data from test markets.

- Material Requirements Planning (MRP)

- Material Requirements Planning provides a time phased plan that determines what material is required, when and in what quantity based on supply (Inventory, Purchase Orders, Work Orders) and demand (Forecast, Sales, Service Spares) factoring in item lead times and scheduled due dates.

- Capacity Planning

- Capacity planning is the process of determining the resource capacity needed by an organization to meet changing demands for its products. Resources can include:
 - Work Centers > Machines > Labor > Tooling

MANUFACTURING EXECUTION CONCEPTS

- Shop Floor Packet

- Package of documents needed for the Shop Floor to execute production
 - Traveler
 - Drawings
 - Specification Sheets
 - Labels

- Data Capture System

- System to capture time spent, material used, material scrapped, labor incurred, downtime incurred and quantities completed on the Manufacturing Floor
 - Could be software or paper based system

- Execution Reporting

- Reports produced from the data captured from the Manufacturing Floor, used to help management make business decisions

NetSuite Fit Across the Manufacturing Processes

Highest Fit



Lowest Fit

Make to Stock / Forecast You purchase or manufacture products to meet forecasts and put them into stock	Configure to Order Your products have some variability and features / options are selected at order entry	Project-driven / Project Manufacturing You use projects to manage the process of building large / complex products
Assemble to Order You assemble products after receiving an order (and often make sub-components to stock / forecast)	Contract Manufacturing You outsource your production to a 3 rd Party to manufacture on your behalf	Engineer to Order You design and manufacture large / complex one-off products based on customer specifications
Make to Order You manufacture products after receiving an order (and tracking labor and burden costs are important)		Job Shop You manufacture small batch's of custom product we low repeat business
Process-driven You use formulas or recipes, instead of BOMs, and often manufacture in batches		Continuous Process The materials, either dry bulk or fluids that are being processed are continuously in motion, undergoing chemical reactions or subject to mechanical or heat treatment.

MAKE TO STOCK

Make to Stock - A production environment where products can be and usually are finished before receipt of a customer order. Customer orders are typically filled from existing stocks, and production orders are used to replenish those stocks. Syn: produce-to-stock.

Common Micro-Verticals

- Consumer Electronics
- Outdoor Products
- Baby Supplies
- Lighting

SECRID



ASSEMBLE TO ORDER

Assemble-to-Order - (ATO) A production environment where a good or service can be assembled after receipt of a customer's order. The key components used in the assembly or finishing process are planned and usually stocked in anticipation of a customer order. Receipt of an order initiates assembly of the customized product. Syn: finish-to-order.

Common Micro-Verticals

High Tech Electronics
Consumer Electronics
Furniture

P³ Medical


New Tech Machinery
A MAZZELLA COMPANY

MAKE TO ORDER

Make-to-Order - A production environment where a good or service can be made after receipt of a customer's order. The final product is usually a combination of standard items and items custom-designed to meet the special needs of the customer.

Common Micro-Verticals

- Industrial Supply
- Custom Furniture
- Industrial Equipment
- Building Materials



PROCESS DRIVEN

Process Manufacturing - Production that adds value by mixing, separating, forming, and/or performing chemical reactions. It may be done in either batch or continuous mode

pai.



Common Micro-Verticals

Food and Beverage
Health & Beauty
Chemical



CONFIGURE TO ORDER

Product Configurator - A system, generally rule-based, to be used in design-to-order, engineer-to-order, or make-to-order environments where numerous product variations exist.

Common Micro Verticals

Furniture

Industrial Electronics

Industrial Machinery

Capital Equipment

Building Materials



CONTRACT MANUFACTURING

Contract Manufacturing - A situation in which a third party makes products that are packaged under another company's label.

Common Micro-Verticals

High Tech Electronics

Medical Device

Consumer Electronics

Lighting

SECRID



A photograph of a woman and a man sitting at a table in a meeting, both smiling and looking towards the right. The woman is on the left, wearing a denim shirt. The man is on the right, wearing a white long-sleeved shirt. The background is a bright, modern office setting with a window. The text 'REQUIREMENTS FOR PROJECT MANUFACTURING CUSTOMERS' is overlaid in large, bold, white capital letters across the center of the image.

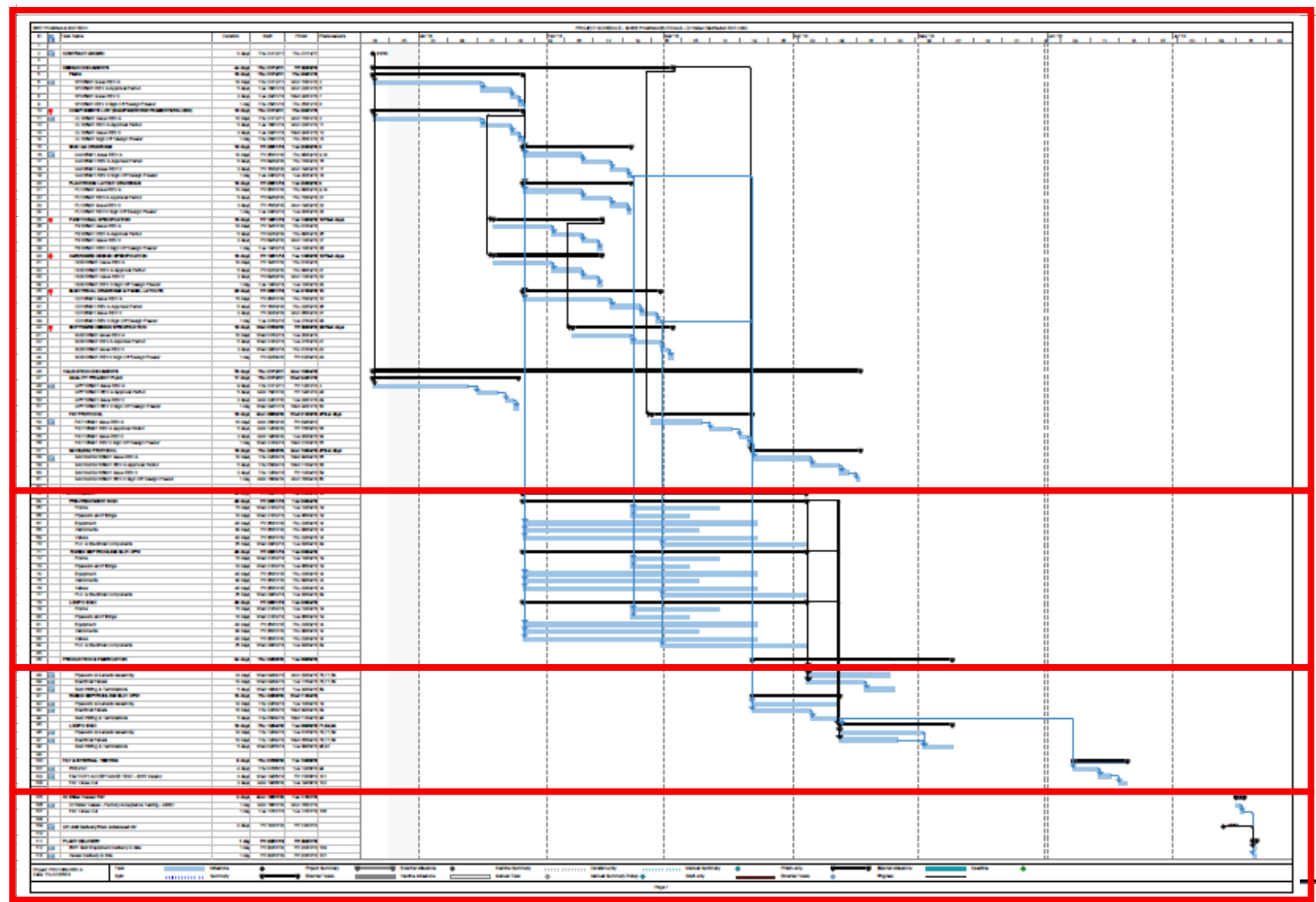
REQUIREMENTS FOR PROJECT MANUFACTURING CUSTOMERS

Engineering / Design

Procurement

Manufacturing

Installation / Commissioning



103	FAT Close Out	2 days	Mon 18/07/18	Tue 19/07/18 1:02
104				
105	DI Water Vessel FAT	2 days	Mon 16/07/18	Tue 17/07/18
106	DI Water Vessel - Factory Acceptance Testing - ABC	1 day	Mon 16/07/18	Mon 16/07/18
107	FAT Close Out	1 day	Tue 17/07/18	Tue 17/07/18 1:06
108				
109	UV Unit Delivery from Advanced UV	0 days	Fri 13/07/18	Fri 13/07/18
110				
111	PLANT DELIVERY	1 day	Fri 20/07/18	Fri 20/07/18
112	BWT Ssd Equipment Delivery to Site	1 day	Fri 20/07/18	Fri 20/07/18 1:09

Key Functional Requirements for Project Manufacturers

- Accurate costs

- Materials
- Labour
- Design
- Engineering
- Commissioning

- Job Costing / Project Costing
- Cost Commitment Reporting
- Project Pegging for Stock Allocation
- Project Co-Mingling for Procurement
- Manufacturing Scheduled by Project

Activities / Dates / Milestones

- And other activities scheduled by manufacturing progress

- Rev Rec based on Manufacturing Progress
- Invoicing for Manufactured Good to be driven by Project Milestones
 - No Invoice at point of item shipment

Project Costing Report filtered for two customer projects – Budget Data and Actuals Calculated. Parent also summarised.

Project Costing Report More

Filter

PARENT CLASS

- Corporate Sales
- Customer Projects**
- Customer Projects : Project 1
- Customer Projects : Project 2
- Customer Projects : Project 3

Projects

PROJECT	BUDGET REVENUE	INVOICED REVENUE	REVENUE % INVOICED	TOTAL % COSTS INCURRED	EXTERNAL COSTS TO DATE	EXTERNAL % COMPLETE	BUDGET EXTERNAL COSTS REMAINING	INTERNAL COSTS TO DATE	INTERNAL % COMPLETE	BUDGET INTERNAL COSTS REMAINING	TOTAL COSTS BUDGET	TOTAL COSTS TO DATE	TOTAL % COSTS INCURRED
Customer Projects	70,000.00	10,000.00	25.00%	12.81%	16,986.92	20.14%	16,986.92	867.92	2.98%	24,132.08	50,000.00	8,881.92	12.81%
Customer Projects : Project 1	20,000.00	10,000.00	50.00%	0.43%	65.25	0.28%	19,934.75	51.25	0.51%	9,948.75	15,000.00	65.25	0.43%
Customer Projects : Project 2	50,000.00	0.00		25.19%	20,000.00		20,000.00	816.67	5.44%	14,183.33	35,000.00	8,816.67	25.19%

A photograph of two women in a factory or industrial setting. The woman on the left has short brown hair and is wearing a blue jacket. The woman on the right has short blonde hair, wears glasses, a white t-shirt, and a necklace. They are both looking at a laptop screen. The background is a blurred industrial environment with machinery and lights.

Project Manufacturing
DO WE HAVE
COMPETITION?

TOP COMMON COMPETITORS IN MANUFACTURING

By Volume & Velocity

Acumatica

SAP[®] Business One

Microsoft Dynamics

- Business Central
- NAV

EPICOR

IFS

By Vertical Niche Focus

QAD

rootstock[™]
CLOUD ERP

IQMS
Manufacturing ERP

SYSPRO[™]
Simplifying your Success

JUSTFOOD

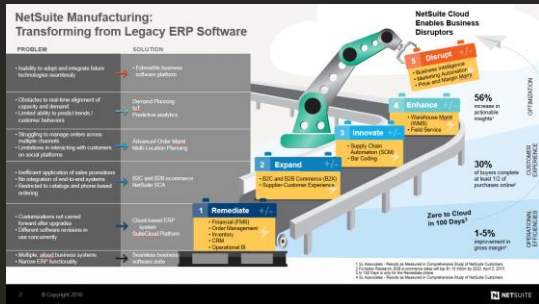
E2

VAI

NETSUITE MANUFACTURING

- 1 Levels of Manufacturing
- 2 Work Orders and Assemblies
- 3 WIP and Routings
- 4 Advanced Manufacturing

WORK ORDERS AND ASSEMBLIES



- Track BOM
- Create Shop Floor Tracking Mechanism
- Fixed Lead Time Planning
- Consume Component upon completion and create Finished Good item
- Calculate Finished Good cost from Components

Work Orders and Assembly

- + WO and Assemblies
- Routings
- Capture Operational Setup and Run Time
- Variable Lead Time Planning
- Forward/Backward Schedule
- Backflush Material/ Labor or Complete separately
- Cost Collection at Operational Level
- Calculate Finished Good cost from Components and Operations

Work in Process and Routings

- +WO and Assemblies
- +WIP and Routings
- Asset based Work Bench
- Discrete and Batch setup
- Finite based Work Order Scheduling
- Capacity Planning
- Backflush Material/ Labor at Operation used at
- Capture Actual Operational Setup and Run Times as they happen
- Tablet/Scanner for Real Time Work Order Tracking
- Downtime reporting
- In Process Quality

Advanced Manufacturing

WORK ORDER AND ASSEMBLIES

STREAMLINES BASIC MFG AND ASSEMBLIES, OPTIMIZE INVENTORY AND IMPROVE PRODUCTIVITY

WORK ORDERS - NetSuite's work order capabilities allow manufacturers to readily plan the build process for production work orders to actively replenish inventory levels of finished goods. Alternatively, you can create special order work orders to build to exact specifications for a particular customer and order

ASSEMBLY MANAGEMENT - NetSuite's assembly management capabilities enable you to more effectively manage component quantities and multi-level assemblies using revision or effectivity dates if necessary.

WHY USE? Building on NetSuite's core strength in inventory and warehouse management, NetSuite allows multi-level assemblies to be built one level at a time or all at once.



COMMON BUSINESS CHALLENGES

UNDERSTANDING YOUR *PROSPECT'S* CHALLENGES

- Hard to get accurate inventory at the component and assembly levels
- Need a way to track product history for the assemblies being built
- Inventory replenishment is difficult to plan or see usage
- Need some light assembly in the warehouse
- Would like to track work done but don't want to leverage routings.



—


NETSUITE

in action

Assembly/Bill of Materials MBK001

Edit Back Supply Chain Snapshot Actions

Primary Information

ITEM NAME/NUMBER MBK001	UNITS TYPE Each	ITEM IMAGE 
DISPLAY NAME/CODE All Terrain Mountain Bike	STOCK UNITS Each	
SUBITEM OF	PURCHASE UNITS Each	
UPC CODE	SALE UNITS Each	
	BASE UNIT Ea	

Classification

SUBSIDIARY Parent Company : United Kingdom	DEPARTMENT Production : Finished Goods	PREFERRED LOCATION
<input type="checkbox"/> INCLUDE CHILDREN	CLASS Sports & Outdoor Goods	PLANNER
	LOCATION	

Scheduling

SCHEDULING ATTRIBUTE 1	SCHEDULING ATTRIBUTE 2	SCHEDULING ATTRIBUTE 3
PRICING UPDATE ITEM CATEGORY	ITEM VALIDATIONS ITEM GROUP	

Manufacturing Purchasing / Inventory Sales / Pricing Accounting Inventory Detail Item360 Related Records Communication Preferences System Information Hazmat/Dangerous Goods Matrix Web Store Tax Reporting

PHANTOM MARK SUB-ASSEMBLIES PHANTOM

SPECIAL WORK ORDER ITEM EFFECTIVE BOM CONTROL

Revision Control

Components

DISPLAY COMPONENTS ON TRANSACTIONS USE COMPONENT YIELD

ITEM	DESCRIPTION	COMPONENT YIELD	BOM QUANTITY	ITEM SOURCE	QUANTITY	UNITS	SCHEDULE	EFFECTIVE DATE	OBSOLETE DATE	EFFECTIVE REVISION	OBSOLETE REVISION
PRODUCTION COMPONENTS : FRM001	All Terrain MB Frame	100.0%	1	Stock	1	Ea	S-1 Taxable	01/03/1970		Default	
PRODUCTION COMPONENTS : BHB001	MB Handle Bar STD	100.0%	1	Stock	1	Ea	S-1 Taxable	01/03/1970		Default	
WHL001	All Terrain MB Wheel	100.0%	2	Work Order	2	Ea	S-1 Taxable	01/03/1970		Default	

Activities Shipping Receiving Inventory Reports Analytics Documents Setup Manufacturing Planning Support

Primary Information

ITEM NAME/NUMBER MBK001	UNITS TYPE Each	ITEM IMAGE 
DISPLAY NAME/CODE All Terrain Mountain Bike	STOCK UNITS Each	
SUBITEM OF	PURCHASE UNITS Each	
UPC CODE	SALE UNITS Each	
	BASE UNIT Ea	

DESCRIPTION
All Terrain Mountain Bike

Classification

SUBSIDIARY Parent Company : United Kingdom	DEPARTMENT Production : Finished Goods	PREFERRED LOCATION
<input type="checkbox"/> INCLUDE CHILDREN	CLASS Sports & Outdoor Goods	PLANNER
	LOCATION	

Scheduling

SCHEDULING ATTRIBUTE 1	SCHEDULING ATTRIBUTE 2	SCHEDULING ATTRIBUTE 3
PRICING UPDATE ITEM CATEGORY	ITEM VALIDATIONS ITEM GROUP	

Manufacturing Purchasing / Inventory Sales / Pricing Accounting Inventory Detail Item360 Related Records Communication Preferences System Information Hazmat/Dangerous Goods Matrix Web Store Tax Reporting

PHANTOM MARK SUB-ASSEMBLIES PHANTOM

SPECIAL WORK ORDER ITEM EFFECTIVE BOM CONTROL

Revision Control

Components

DISPLAY COMPONENTS ON TRANSACTIONS USE COMPONENT YIELD

ITEM	DESCRIPTION	COMPONENT YIELD	BOM QUANTITY	ITEM SOURCE	QUANTITY	UNITS	SCHEDULE	EFFECTIVE DATE	OBSOLETE DATE	EFFECTIVE REVISION	OBSOLETE REVISION
PRODUCTION COMPONENTS : FRM001	All Terrain MB Frame	100.0%	1	Stock	1	Ea	S-1 Taxable	01/03/1970		Default	
PRODUCTION COMPONENTS : BHB001	MB Handle Bar STD	100.0%	1	Stock	1	Ea	S-1 Taxable	01/03/1970		Default	
WHL001	All Terrain MB Wheel	100.0%	2	Work Order	2	Ea	S-1 Taxable	01/03/1970		Default	
PRODUCTION COMPONENTS : HDW002	MB Hardware Pack STD	100.0%	1	Stock	1	Ea	S-1 Taxable	01/03/1970		Default	

Activities Shipping Receiving **Inventory** Reports Analytics Documents Setup Manufacturing Planning Support

ITEM NAME/NUMBER WHL001	UNITS TYPE Each	ITEM IMAGE 
DISPLAY NAME/CODE All Terrain MB Wheel	STOCK UNITS Each	
SUBITEM OF	PURCHASE UNITS Each	
UPC CODE	SALE UNITS Each	
	BASE UNIT Ea	

DESCRIPTION
All Terrain MB Wheel

Classification

SUBSIDIARY Parent Company : United Kingdom <input type="checkbox"/> INCLUDE CHILDREN	DEPARTMENT Production : Finished Goods CLASS Sports & Outdoor Goods LOCATION	PREFERRED LOCATION PLANNER
--	--	-----------------------------------

Scheduling

SCHEDULING ATTRIBUTE 1	SCHEDULING ATTRIBUTE 2	SCHEDULING ATTRIBUTE 3
PRICING UPDATE ITEM CATEGORY	ITEM VALIDATIONS ITEM GROUP	

Manufacturing Purchasing / Inventory Sales / Pricing Accounting Inventory Detail Item360 Related Records Communication Preferences System Information Hazmat/Dangerous Goods Matrix Web Store Tax Reporting

PHANTOM MARK SUB-ASSEMBLIES PHANTOM
 SPECIAL WORK ORDER ITEM EFFECTIVE BOM CONTROL
 Effective Date

Components

DISPLAY COMPONENTS ON TRANSACTIONS USE COMPONENT YIELD

ITEM	DESCRIPTION	COMPONENT YIELD	BOM QUANTITY	ITEM SOURCE	QUANTITY	UNITS	SCHEDULE	EFFECTIVE DATE	OBSOLETE DATE
PRODUCTION COMPONENTS : RIM001 MB Rim				Purchase Order	1	Ea	S-1 Taxable		
PRODUCTION COMPONENTS : SPK001 MB Spokes				Stock	28	Ea	S-1 Taxable		
PHA0001 Tyre Assembly	Tyre Assembly			Phantom	1	Ea	S-1 Taxable		

Work Order WO0000087 RELEASED

Edit Back Create Build Close Print BOM Actions

Primary Information

ORDER # WO0000087	DATE 30/07/2019	QUANTITY 3	SCHEDULING METHOD
SUBSIDIARY United Kingdom	REVISION Default	UNITS Each	PRODUCTION START DATE 30/07/2019
ASSEMBLY MBK001 All Terrain Mountain Bike	MANUFACTURING ROUTING	BUILDABLE 3	PRODUCTION END DATE 30/07/2019
LOCATION Manchester	<input type="checkbox"/> WIP	BUILT 0	<input type="checkbox"/> AUTO-CALCULATE LAG
MEMO	<input type="checkbox"/> MARK SUB-ASSEMBLIES PHANTOM	STATUS Released	PLANNER
	<input checked="" type="checkbox"/> FIRMED		

Classification

CUSTOMER	CLASS Sports & Outdoor Goods	DEPARTMENT Production : Finished Goods
----------	---------------------------------	---

Scheduling

SCHEDULING ATTRIBUTE 1	SCHEDULING ATTRIBUTE 2	SCHEDULING ATTRIBUTE 3	SCHEDULE SEQUENCE
PROJECT			

Items Inspection Analysis Communication Related Records System Information Custom EFT Source Transaction Case Record Target Transaction Case Record Sales Team

ITEM	DESCRIPTION	BOM QUANTITY	QUANTITY	UNITS	INVENTORY DETAIL	COMMITTED	USED IN BUILD	BACK ORDERED	AVAILABLE	ON HAND	COMPONENT YIELD	COMMIT	COMMITMENT CONFIRMED	ITEM SOURCE	TRANSACTION	PO VENDOR	PLANNED COMPONENT ISSUE DATE	OPERATION	OPTIONS	HISTORY
PRODUCTION COMPONENTS : FRM001 All Terrain MB Frame		3	3	Ea		3	0	0	30	50	100.0%	Available Qty		Stock		Johnson Supply	30/07/2019 8:00 am			History
PRODUCTION COMPONENTS : BHB001 MB Handle Bar STD		3	3	Ea		3	0	0	20	40	100.0%	Available Qty		Stock		AAK	30/07/2019 8:00 am			History
WHL001 All Terrain MB Wheel	All Terrain MB Wheel	6	6	Ea		6	0	0	6	36	100.0%	Available Qty		Work Order	WO0000088		30/07/2019 8:00 am			History
PRODUCTION COMPONENTS : HDW002 MB Hardware Pack STD		3	3	Ea		3	0	0	44	64	100.0%	Available Qty		Stock		AAK	30/07/2019 8:00 am			History

Edit Back Create Build Close Print BOM Actions

Work Order **WO0000087** **RELEASED**

[Edit](#)
[Back](#)
[Create Build](#)
[Close](#)
[Print BOM](#)
[Actions](#)

Primary Information

ORDER # WO0000087	DATE 30/07/2019	QUANTITY 3	SCHEDULING METHOD
SUBSIDIARY United Kingdom	REVISION Default	UNITS Each	PRODUCTION START DATE 30/07/2019
ASSEMBLY MBK001 All Terrain Mountain Bike	MANUFACTURING ROUTING	BUILDABLE 3	PRODUCTION END DATE 30/07/2019
LOCATION Manchester	<input type="checkbox"/> WIP	BUILT 0	<input type="checkbox"/> AUTO-CALCULATE LAG
MEMO	<input type="checkbox"/> MARK SUB-ASSEMBLIES PHANTOM	STATUS Released	PLANNER
	<input checked="" type="checkbox"/> FIRMED		

Classification

CUSTOMER	CLASS Sports & Outdoor Goods	DEPARTMENT Production : Finished Goods
----------	---------------------------------	---

Scheduling

SCHEDULING ATTRIBUTE 1	SCHEDULING ATTRIBUTE 2	SCHEDULING ATTRIBUTE 3	SCHEDULE SEQUENCE
PROJECT			

Items Inspection Analysis Communication Related Records System Information Custom EFT Source Transaction Case Record Target Transaction Case Record Sales Team

ITEM	DESCRIPTION	BOM QUANTITY	QUANTITY	UNITS	INVENTORY DETAIL	COMMITTED	USED IN BUILD	BACK ORDERED	AVAILABLE	ON HAND	COMPONENT YIELD	COMMIT	COMMITMENT CONFIRMED	ITEM SOURCE	TRANSACTION	PO VENDOR	PLANNED COMPONENT ISSUE DATE	OPERATION	OPTIONS	HISTORY
PRODUCTION COMPONENTS : FRM001 All Terrain MB Frame		3	3	Ea		3	0	0	30	50	100.0%	Available Qty		Stock		Johnson Supply	30/07/2019 8:00 am			History
PRODUCTION COMPONENTS : BHB001 MB Handle Bar STD		3	3	Ea		3	0	0	20	40	100.0%	Available Qty		Stock		AAK	30/07/2019 8:00 am			History
WHL001 All Terrain MB Wheel	All Terrain MB Wheel	6	6	Ea		6	0	0	6	36	100.0%	Available Qty		Work Order	WO0000088		30/07/2019 8:00 am			History
PRODUCTION COMPONENTS : HDW002 MB Hardware Pack STD		3	3	Ea		3	0	0	44	64	100.0%	Available Qty		Stock		AAK	30/07/2019 8:00 am			History

[Edit](#)
[Back](#)
[Create Build](#)
[Close](#)
[Print BOM](#)
[Actions](#)

Assembly Build

Save Cancel Reset

Primary Information

REFERENCE # To Be Generated	QUANTITY TO BUILD * 3	CREATED FROM Work Order #WO0000087	POSTING PERIOD Jul 2019
ASSEMBLY MBK001 All Terrain Mountain Bike	UNITS Each	INVENTORY DETAIL	MEMO
REVISION Default	PROJECTED VALUE 1,148.95	DATE * 30/07/2019	FORM * UK MFG MM - Assembly Build Form

Classification

SUBSIDIARY United Kingdom	LOCATION * Manchester	PLANNER	SCHEDULE SEQUENCE
------------------------------	--------------------------	---------	-------------------

Components

Communication System Information Custom Cost Analysis Inspection EFT Source Transaction Case Record Target Transaction Case Record

Customise

COMPONENT	QUANTITY	QUANTITY ON HAND	INVENTORY DETAIL
FRM001	3	50	
BHB001	3	40	
WHL001	6	36	
HDW002	3	64	

Save Cancel Reset

Assembly Build List Search Customise More

Save Cancel Reset

Primary Information

REFERENCE # To Be Generated	QUANTITY TO BUILD * 3	CREATED FROM Work Order #WO0000087	POSTING PERIOD Jul 2019
ASSEMBLY MBK001 All Terrain Mountain Bike	UNITS Each	INVENTORY DETAIL	MEMO
REVISION Default	PROJECTED VALUE 1,281.45	DATE * 30/07/2019	FORM * UK MFG MM - Assembly Build Form

Classification

SUBSIDIARY United Kingdom	LOCATION * Manchester	PLANNER	SCHEDULE SEQUENCE
------------------------------	--------------------------	---------	-------------------

Components Communication System Information Custom Cost Analysis Inspection EFT Source Transaction Case Record Target Transaction Case Record

Customise

COMPONENT	QUANTITY	QUANTITY ON HAND	INVENTORY DETAIL
FRM001	4	50	
BHB001	3	40	
WHL001	6	36	
HDW002	3	64	

Save Cancel Reset

Work Order **WO0000087** **BUILT**
 Edit Back Print BOM Actions

Primary Information

ORDER # WO0000087	DATE 30/07/2019	QUANTITY 3	SCHEDULING METHOD
SUBSIDIARY United Kingdom	REVISION Default	UNITS Each	PRODUCTION START DATE 30/07/2019
ASSEMBLY MBK001 All Terrain Mountain Bike	MANUFACTURING ROUTING	BUILDABLE 0	PRODUCTION END DATE 30/07/2019
LOCATION Manchester	<input type="checkbox"/> WIP	BUILT 3	<input type="checkbox"/> AUTO-CALCULATE LAG
MEMO	<input type="checkbox"/> MARK SUB-ASSEMBLIES PHANTOM	STATUS Built	PLANNER
	<input checked="" type="checkbox"/> FIRMED		

Classification

CUSTOMER	CLASS Sports & Outdoor Goods	DEPARTMENT Production : Finished Goods
----------	---------------------------------	---

Scheduling

SCHEDULING ATTRIBUTE 1	SCHEDULING ATTRIBUTE 2	SCHEDULING ATTRIBUTE 3	SCHEDULE SEQUENCE
PROJECT			

Items	Inspection	Analysis	Communication	Related Records	System Information	Custom	EFT	Source Transaction Case Record	Target Transaction Case Record	Sales Team										
ITEM	DESCRIPTION	BOM QUANTITY	QUANTITY	UNITS	INVENTORY DETAIL	COMMITTED	USED IN BUILD	BACK ORDERED	AVAILABLE	ON HAND	COMPONENT YIELD	COMMIT	COMMITMENT CONFIRMED	ITEM SOURCE	TRANSACTION	PO VENDOR	PLANNED COMPONENT ISSUE DATE	OPERATION	OPTIONS	HISTORY
PRODUCTION COMPONENTS : FRM001 All Terrain MB Frame		3	4	Ea		0	4	0	29	46	100.0%	Available Qty		Stock		Johnson Supply	30/07/2019 8:00 am			History
PRODUCTION COMPONENTS : BHB001 MB Handle Bar STD		3	3	Ea		0	3	0	20	37	100.0%	Available Qty		Stock		AAK	30/07/2019 8:00 am			History
WHL001 All Terrain MB Wheel	All Terrain MB Wheel	6	6	Ea		0	6	0	6	30	100.0%	Available Qty		Work Order	WO0000088		30/07/2019 8:00 am			History
PRODUCTION COMPONENTS : HDW002 MB Hardware Pack STD		3	3	Ea		0	3	0	44	61	100.0%	Available Qty		Stock		AAK	30/07/2019 8:00 am			History

Edit Back Print BOM Actions

ACCOUNT	AMOUNT (DEBIT)	AMOUNT (CREDIT)	POSTING	MEMO	NAME	SUBSIDIARY	DEPARTMENT	PROJECT	LOCATION	CUSTOM SCRIPT
12010 Inventory : Inventory in Stock	£1,281.45		Yes			Parent Company : United Kingdom	Production : Finished Goods	Sports & Outdoor Goods	Manchester	
12010 Inventory : Inventory in Stock		£530.00	Yes			Parent Company : United Kingdom	Production : Finished Goods	Sports & Outdoor Goods	Manchester	
12010 Inventory : Inventory in Stock		£105.00	Yes			Parent Company : United Kingdom	Production : Finished Goods	Sports & Outdoor Goods	Manchester	
12010 Inventory : Inventory in Stock		£481.45	Yes			Parent Company : United Kingdom	Production : Finished Goods	Sports & Outdoor Goods	Manchester	
12010 Inventory : Inventory in Stock		£165.00	Yes			Parent Company : United Kingdom	Production : Finished Goods	Sports & Outdoor Goods	Manchester	

TOTAL: 5

WHAT IT MEANS FOR YOUR PROSPECT

✓ Inventory Visibility

- More accurate inventory at the component and assembly levels
- Better plan for Inventory by seeing actual usages at all levels of the Bill of Material

✓ Work Order Metrics

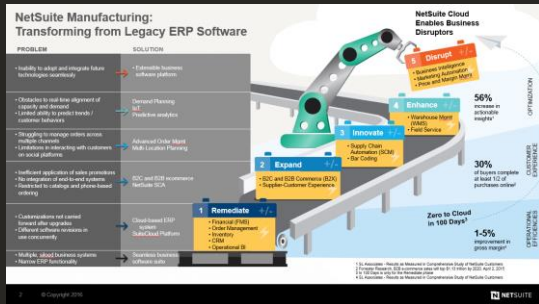
- Light assembly and product history tracking
- More accurate build history

✓ Additional Reporting

- Material shortage reporting
- Work Order Completion Reporting
- Usage tracking



WIP AND ROUTINGS



- Track BOM
- Create Shop Floor Tracking Mechanism
- Fixed Lead Time Planning
- Consume Component upon completion and create Finished Good item
- Calculate Finished Good cost from Components

Work in Process and Routings

- + WO and Assemblies
- Routings
- Capture Operational Setup and Run Time
- Variable Lead Time Planning
- Forward/Backward Schedule
- Backflush Material/ Labor or Complete separately
- Cost Collection at Operational Level
- Calculate Finished Good cost from Components and Operations

Work in Process and Routings

- +WO and Assemblies
- +WIP and Routings
- Asset based Work Bench
- Discrete and Batch setup
- Finite based Work Order Scheduling
- Capacity Planning
- Backflush Material/ Labor at Operation used at
- Capture Actual Operational Setup and Run Times as they happen
- Tablet/Scanner for Real Time Work Order Tracking
- Downtime reporting
- In Process Quality

Work in Process and Routings

WORK IN PROCESS/ROUTINGS

GAIN GREATER CONTROL OVER RESOURCES AND COSTING

WORK IN PROCESS - Basic definition is the "bucket" of costs that are incurred during the manufacturing process. Optimal production management aims to minimize work in process. Work in process requires storage space, represents bound capital not available for investment and carries an inherent risk of earlier expiration of shelf life of the products. Bottom line it is not yet sellable products.

ROUTINGS - The production routings can be set up to represent every step that a product goes through, the expected set-up and run times, the associated work centers, and the cost templates that should be used. This also facilitates the real-time scheduling process, which can be defaulted to forward or backward and also over-ridden on a case by case basis.

WORK IN PROCESS/ROUTINGS

GAIN GREATER CONTROL OVER RESOURCES AND COSTING

WHY USE? Building on Work Order and Assemblies, WIP and Routings allows the customer to have better visibility in where in the manufacturing process they might be on a work order by work order basis. It also provides for greater visibility into the planned costs vs. actual costs within the Work Order

COMMON BUSINESS CHALLENGES

UNDERSTANDING YOUR *PROSPECT'S* CHALLENGES

Our products take a bit of time to produce and we want to track where it might be in the manufacturing process.

We might have more than one way to manufacturing a product and want to see alternative steps.

Want to be able to track how efficiently we are building/making a product.

Need tighter accounting for our manufacturing process.



—

NETSUITE

in action

Activities Shipping Receiving Inventory Reports Analytics Documents Setup Manufacturing Planning Support

Primary Information

ITEM NAME/NUMBER MBK001	UNITS TYPE Each	ITEM IMAGE 
DISPLAY NAME/CODE All Terrain Mountain Bike	STOCK UNITS Each	
SUBITEM OF	PURCHASE UNITS Each	
UPC CODE	SALE UNITS Each	
	BASE UNIT Ea	

DESCRIPTION
All Terrain Mountain Bike

Classification

SUBSIDIARY Parent Company : United Kingdom	DEPARTMENT Production : Finished Goods	PREFERRED LOCATION
<input type="checkbox"/> INCLUDE CHILDREN	CLASS Sports & Outdoor Goods	PLANNER
	LOCATION	

Scheduling

SCHEDULING ATTRIBUTE 1	SCHEDULING ATTRIBUTE 2	SCHEDULING ATTRIBUTE 3
PRICING UPDATE ITEM CATEGORY	ITEM VALIDATIONS ITEM GROUP	

Manufacturing Purchasing / Inventory Sales / Pricing Accounting Inventory Detail Item360 Related Records Communication Preferences System Information Hazmat/Dangerous Goods Matrix Web Store Tax Reporting

PHANTOM MARK SUB-ASSEMBLIES PHANTOM

SPECIAL WORK ORDER ITEM

EFFECTIVE BOM CONTROL
Revision Control

Components Manufacturing Routings

DISPLAY COMPONENTS ON TRANSACTIONS USE COMPONENT YIELD

ITEM	DESCRIPTION	COMPONENT YIELD	BOM QUANTITY	ITEM SOURCE	QUANTITY	UNITS	SCHEDULE	EFFECTIVE DATE	OBSOLETE DATE	EFFECTIVE REVISION	OBSOLETE REVISION
PRODUCTION COMPONENTS : FRM001	All Terrain MB Frame	100.0%	1	Stock	1	Ea	S-1 Taxable	01/03/1970		Default	
PRODUCTION COMPONENTS : BHB001	MB Handle Bar STD	100.0%	1	Stock	1	Ea	S-1 Taxable	01/03/1970		Default	
WHL001	All Terrain MB Wheel	100.0%	2	Work Order	2	Ea	S-1 Taxable	01/03/1970		Default	
PRODUCTION COMPONENTS : HDW002	MB Hardware Pack STD	100.0%	1	Stock	1	Ea	S-1 Taxable	01/03/1970		Default	

Manufacturing Routing

[Save](#) [Cancel](#) [Actions](#)

Primary Information

SUBSIDIARY *
United Kingdom

ITEM
MBK001

LOCATION *
Manchester

NAME *
MCR - MBK001

MEMO

- DEFAULT
- INACTIVE
- AUTO-CALCULATE LAG

Routing Steps

OPERATION SEQUENCE *	OPERATION NAME *	MANUFACTURING WORK CENTER *	MACHINE RESOURCES	LABOR RESOURCES	MANUFACTURING COST TEMPLATE *	SETUP TIME (MIN) *	RUN RATE (MIN/UNIT) *	LAG TYPE	LAG AMOUNT	LAG UNITS
10	Weld	MCR - Welding Station A	1	1	MCR - Welding Station A	30	60			
20	Chain Assembly	MCR - Assembly Cell A	0	1	MCR - Assembly Cell A	30	25	Quantity	1	Ea
30	Wheel Assembly	MCR - Wheel Assembly	0	1	MCR - Wheel Assembly	30	20			
40	Final Assembly	MCR - Assembly Cell A	0	1	MCR - Assembly Cell A	10	20	Quantity	1	Ea
50	QC Inspection	MCR - Inspection Zone	0	1	MCR - Inspection Zone	10	15			

[Add](#) [Cancel](#) [Insert](#) [Remove](#)

[Save](#) [Cancel](#) [Actions](#)

Work Order **WO0000087** **RELEASED**

[Edit](#)
[Back](#)
[Create Build](#)
[Close](#)
[Print BOM](#)
[Actions](#)

Primary Information

ORDER # WO0000087	DATE 30/07/2019	QUANTITY 3	SCHEDULING METHOD
SUBSIDIARY United Kingdom	REVISION Default	UNITS Each	PRODUCTION START DATE 30/07/2019
ASSEMBLY MBK001 All Terrain Mountain Bike	MANUFACTURING ROUTING	BUILDABLE 3	PRODUCTION END DATE 30/07/2019
LOCATION Manchester	<input type="checkbox"/> WIP	BUILT 0	<input type="checkbox"/> AUTO-CALCULATE LAG
MEMO	<input type="checkbox"/> MARK SUB-ASSEMBLIES PHANTOM	STATUS Released	PLANNER
	<input checked="" type="checkbox"/> FIRMED		

Classification

CUSTOMER	CLASS Sports & Outdoor Goods	DEPARTMENT Production : Finished Goods
----------	---------------------------------	---

Scheduling

SCHEDULING ATTRIBUTE 1	SCHEDULING ATTRIBUTE 2	SCHEDULING ATTRIBUTE 3	SCHEDULE SEQUENCE
PROJECT			

Items Inspection Analysis Communication Related Records System Information Custom EFT Source Transaction Case Record Target Transaction Case Record Sales Team

ITEM	DESCRIPTION	BOM QUANTITY	QUANTITY	UNITS	INVENTORY DETAIL	COMMITTED	USED IN BUILD	BACK ORDERED	AVAILABLE	ON HAND	COMPONENT YIELD	COMMIT	COMMITMENT CONFIRMED	ITEM SOURCE	TRANSACTION	PO VENDOR	PLANNED COMPONENT ISSUE DATE	OPERATION	OPTIONS	HISTORY
PRODUCTION COMPONENTS : FRM001 All Terrain MB Frame		3	3	Ea		3	0	0	30	50	100.0%	Available Qty		Stock		Johnson Supply	30/07/2019 8:00 am			History
PRODUCTION COMPONENTS : BHB001 MB Handle Bar STD		3	3	Ea		3	0	0	20	40	100.0%	Available Qty		Stock		AAK	30/07/2019 8:00 am			History
WHL001 All Terrain MB Wheel	All Terrain MB Wheel	6	6	Ea		6	0	0	6	36	100.0%	Available Qty		Work Order	WO0000088		30/07/2019 8:00 am			History
PRODUCTION COMPONENTS : HDW002 MB Hardware Pack STD		3	3	Ea		3	0	0	44	64	100.0%	Available Qty		Stock		AAK	30/07/2019 8:00 am			History

[Edit](#)
[Back](#)
[Create Build](#)
[Close](#)
[Print BOM](#)
[Actions](#)

Work Order **WO0000087** **RELEASED**
 Edit Back **Issue Components** Enter Completion Enter Completion with Backflush Close Print BOM Actions

Primary Information

ORDER # WO0000087	MANUFACTURING ROUTING MCR - MBK001	STATUS Released
CUSTOMER	<input type="checkbox"/> AUTO-CALCULATE LAG	<input checked="" type="checkbox"/> FIRMED
PROJECTX	BUILT 0	MEMO
ASSEMBLY MBK001 All Terrain Mountain Bike	QUANTITY SCRAPPED 0	SCHEDULING METHOD Backward
REVISION Default	QUANTITY 3	PRODUCTION START DATE 30/07/2019
<input type="checkbox"/> MARK SUB-ASSEMBLIES PHANTOM	UNITS Each	PRODUCTION END DATE 30/07/2019
<input checked="" type="checkbox"/> WIP	DATE 30/07/2019	

Classification

SUBSIDIARY United Kingdom	PROJECT Sports & Outdoor Goods	LOCATION Manchester
DEPARTMENT Production : Finished Goods		
SCHEDULING ATTRIBUTE 1	SCHEDULING ATTRIBUTE 3	PLANNER
SCHEDULING ATTRIBUTE 2	SCHEDULE SEQUENCE	

ITEM	OPERATION	COMMITTED	USED IN BUILD	BACK ORDERED	COMPONENT YIELD	BOM QUANTITY	QUANTITY	UNITS	INVENTORY DETAIL	DESCRIPTION	COMMIT	COMMITMENT CONFIRMED	ORDER PRIORITY	OPTIONS	ITEM SOURCE	TRANSACTION	PLANNED COMPONENT ISSUE DATE	HISTORY
PRODUCTION COMPONENTS : FRM001 All Terrain MB Frame		3	0	0	100.0%	3	3	Ea			Available Qty			Stock		WO0000087	30/07/2019 9:50 am	History
PRODUCTION COMPONENTS : BHB001 MB Handle Bar STD		3	0	0	100.0%	3	3	Ea			Available Qty			Stock		WO0000087	30/07/2019 9:50 am	History
WHL001 All Terrain MB Wheel		6	0	0	100.0%	6	6	Ea		All Terrain MB Wheel	Available Qty			Work Order	WO0000088	30/07/2019 9:50 am	History	
PRODUCTION COMPONENTS : HDW002 MB Hardware Pack STD		3	0	0	100.0%	3	3	Ea			Available Qty			Stock		WO0000087	30/07/2019 9:50 am	History

Edit Back Issue Components Enter Completion Enter Completion with Backflush Close Print BOM Actions

Work Order Issue List Search Customise More
 Save Cancel Reset

Primary Information

REFERENCE # To Be Generated
 ASSEMBLY MBK001 All Terrain Mountain Bike
 DATE * 30/07/2019

MANUFACTURING ROUTING MCR - MBK001
 MEMO

CREATED FROM Work Order #WO0000087
 POSTING PERIOD Jul 2019
 FORM * UK MFG MM - Work Order Issue Form

Classification

SUBSIDIARY United Kingdom
 LOCATION Manchester
 PLANNER
 CLASS Sports & Outdoor Goods
 DEPARTMENT Production : Finished Goods

Issue Operation Component

STARTING OPERATION
 ENDING OPERATION

REVISION Default

COMPONENT	OPERATION	QUANTITY	INVENTORY DETAIL
FRM001		3	
BHB001		3	
WHL001		6	
HDW002		3	

GL Impact Return to Work Order Issue #WOI0000020

ACCOUNT	AMOUNT (DEBIT)	AMOUNT (CREDIT)	POSTING	MEMO	NAME	SUBSIDIARY	DEPARTMENT	PROJECT	LOCATION	CUSTOM SCRIPT
12010 Inventory : Inventory in Stock		£397.50	Yes			Parent Company : United Kingdom	Production : Finished Goods	Sports & Outdoor Goods	Manchester	
12040 Inventory : WIP	£397.50		Yes			Parent Company : United Kingdom	Production : Finished Goods	Sports & Outdoor Goods	Manchester	
12010 Inventory : Inventory in Stock		£105.00	Yes			Parent Company : United Kingdom	Production : Finished Goods	Sports & Outdoor Goods	Manchester	
12040 Inventory : WIP	£105.00		Yes			Parent Company : United Kingdom	Production : Finished Goods	Sports & Outdoor Goods	Manchester	
12010 Inventory : Inventory in Stock		£481.45	Yes			Parent Company : United Kingdom	Production : Finished Goods	Sports & Outdoor Goods	Manchester	
12040 Inventory : WIP	£481.45		Yes			Parent Company : United Kingdom	Production : Finished Goods	Sports & Outdoor Goods	Manchester	
12010 Inventory : Inventory in Stock		£165.00	Yes			Parent Company : United Kingdom	Production : Finished Goods	Sports & Outdoor Goods	Manchester	
12040 Inventory : WIP	£165.00		Yes			Parent Company : United Kingdom	Production : Finished Goods	Sports & Outdoor Goods	Manchester	

TOTAL: 8

Work Order **WO0000087** **RELEASED** List Search Customise

Edit Back Issue Components **Enter Completion** Enter Completion with Backflush Close Print BOM Actions

Primary Information

ORDER # WO0000087	MANUFACTURING ROUTING MCR - MBK001	STATUS Released
CUSTOMER	<input type="checkbox"/> AUTO-CALCULATE LAG	<input checked="" type="checkbox"/> FIRMED
PROJECTX	BUILT 0	MEMO
ASSEMBLY MBK001 All Terrain Mountain Bike	QUANTITY SCRAPPED 0	SCHEDULING METHOD Backward
REVISION Default	QUANTITY 3	PRODUCTION START DATE 30/07/2019
<input type="checkbox"/> MARK SUB-ASSEMBLIES PHANTOM	UNITS Each	PRODUCTION END DATE 30/07/2019
<input checked="" type="checkbox"/> WIP	DATE 30/07/2019	

Classification

SUBSIDIARY United Kingdom	PROJECT Sports & Outdoor Goods	LOCATION Manchester
DEPARTMENT Production : Finished Goods		
SCHEDULING ATTRIBUTE 1	SCHEDULING ATTRIBUTE 3	PLANNER
SCHEDULING ATTRIBUTE 2	SCHEDULE SEQUENCE	

Items Operations Planned Time Sales Team Communication Related Records System Information Custom Work Order Analysis EFT Inspection Source Transaction Case Record Target Transaction Case Record

ITEM	OPERATION	COMMITTED	USED IN BUILD	BACK ORDERED	COMPONENT YIELD	BOM QUANTITY	QUANTITY	UNITS	INVENTORY DETAIL	DESCRIPTION	COMMIT	COMMITMENT CONFIRMED	ORDER PRIORITY	OPTIONS	ITEM SOURCE	TRANSACTION	PLANNED COMPONENT ISSUE DATE	HISTORY
PRODUCTION COMPONENTS : FRM001 All Terrain MB Frame		3	0	0	100.0%	3	3	Ea			Available Qty			Stock		WO0000087	30/07/2019 9:50 am	History
PRODUCTION COMPONENTS : BHB001 MB Handle Bar STD		3	0	0	100.0%	3	3	Ea			Available Qty			Stock		WO0000087	30/07/2019 9:50 am	History
WHL001 All Terrain MB Wheel		6	0	0	100.0%	6	6	Ea		All Terrain MB Wheel	Available Qty			Work Order	WO0000088	WO0000087	30/07/2019 9:50 am	History
PRODUCTION COMPONENTS : HDW002 MB Hardware Pack STD		3	0	0	100.0%	3	3	Ea			Available Qty			Stock		WO0000087	30/07/2019 9:50 am	History

Edit Back Issue Components Enter Completion Enter Completion with Backflush Close Print BOM Actions

Work Order Completion

Save Cancel Reset

List Search Customise More

Primary Information

CUSTOM FORM *
UK MFG MM - Work ...r Completion Form

REFERENCE #
To Be Generated

ASSEMBLY
MBK001 All Terrain Mountain Bike

MANUFACTURING ROUTING
MCR - MBK001

UNITS
Each

BACKFLUSH

WORK ORDER QUANTITY
3

PROJECTED VALUE

CREATED FROM
Work Order #WO0000087

DATE *
30/07/2019

POSTING PERIOD
Jul 2019

MEMO

Classification

SUBSIDIARY
United Kingdom

LOCATION
Manchester

CLASS
Sports & Outdoor Goods

DEPARTMENT
Production : Finished Goods

Operation Completion

STARTING OPERATION *
10

ENDING OPERATION *
10

COMPLETED QUANTITY
3

Assembly Detail

QUANTITY TO BUILD

INVENTORY DETAIL

REVISION
Default

PLANNER

SCRAP QUANTITY

Operations Inspection Cost Analysis Communication System Information EFT Source Transaction Case Record Target Transaction Case Record

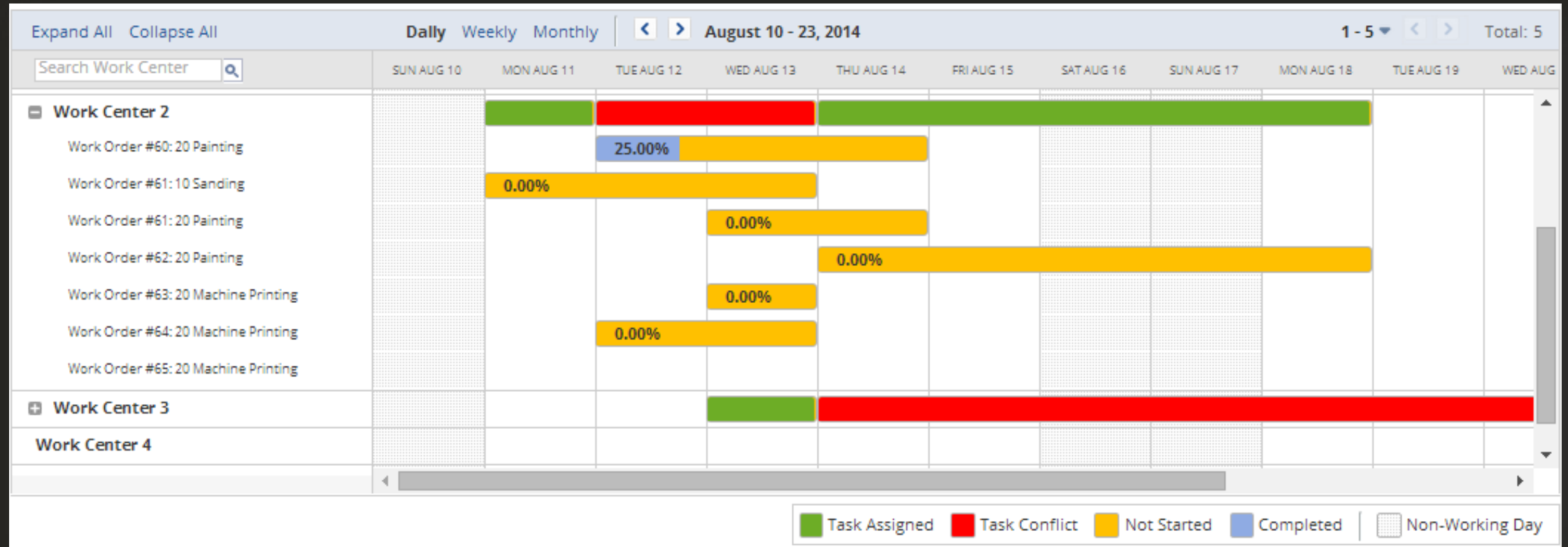
OPERATION SEQUENCE	OPERATION NAME	MANUFACTURING WORK CENTER	MACHINE RESOURCES	LABOR RESOURCES	INPUT QUANTITY	QUANTITY REMAINING	PREDECESSOR COMPLETED QUANTITY	COMPLETED QUANTITY	RECORD SETUP TIME	MACHINE SETUP TIME (MIN)	LABOR SETUP TIME (MIN)	MACHINE RUN TIME (MIN)	LABOR RUN TIME (MIN)
10	Weld	MCR - Welding Station A	1	1	3	3		3	<input checked="" type="checkbox"/>	30	30	180	180
20	Chain Assembly	MCR - Assembly Cell A	0	1	3	3	0		<input checked="" type="checkbox"/>				
30	Wheel Assembly	MCR - Wheel Assembly	0	1	3	3	0		<input checked="" type="checkbox"/>				
40	Final Assembly	MCR - Assembly Cell A	0	1	3	3	0		<input checked="" type="checkbox"/>				
50	QC Inspection	MCR - Inspection Zone	0	1	3	3	0		<input checked="" type="checkbox"/>				

GL Impact Return to Work Order Completion #WCO0000060

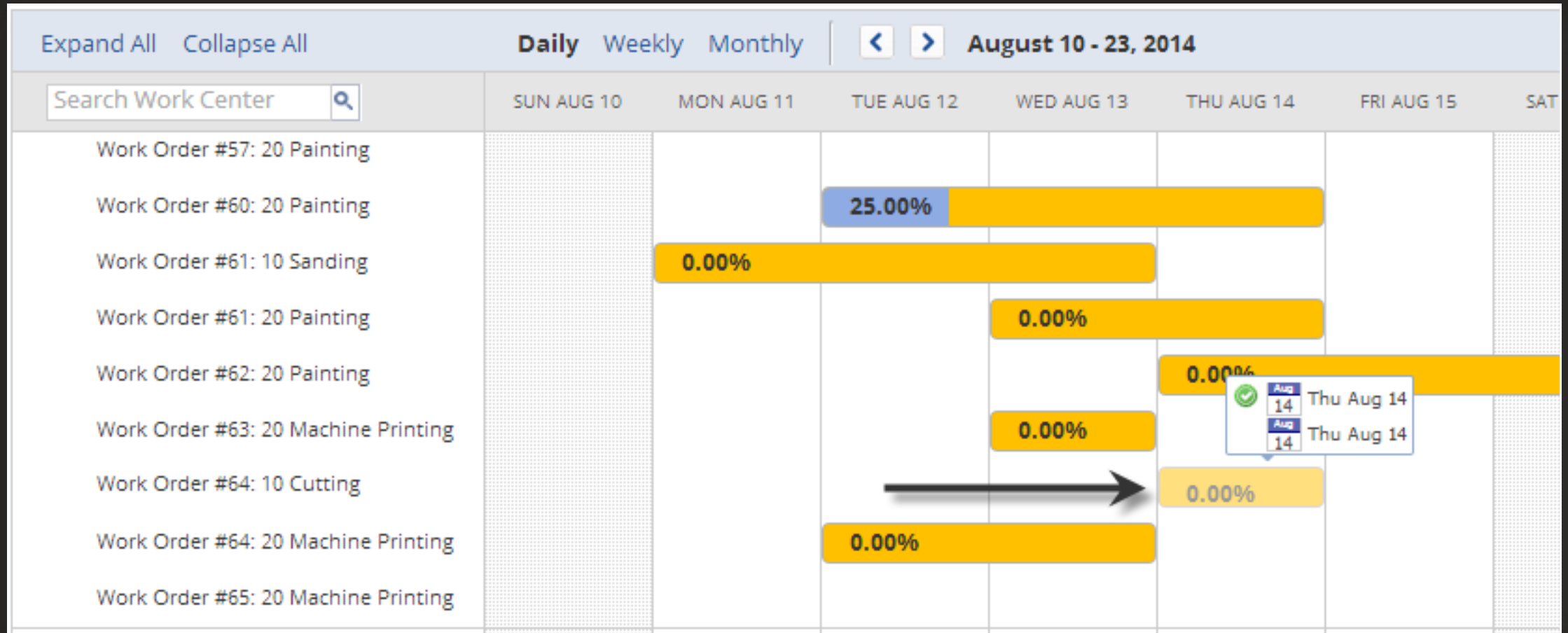
ACCOUNT	AMOUNT (DEBIT)	AMOUNT (CREDIT)	POSTING	MEMO	NAME	SUBSIDIARY	DEPARTMENT	PROJECT	LOCATION	CUSTOM SCRIPT
65015 Staff Costs : Direct Labour		£45.00	Yes			Parent Company : United Kingdom	Production : Finished Goods	Sports & Outdoor Goods	Manchester	
12040 Inventory : WIP	£45.00		Yes			Parent Company : United Kingdom	Production : Finished Goods	Sports & Outdoor Goods	Manchester	
65017 Staff Costs : Indirect Labour		£30.00	Yes			Parent Company : United Kingdom	Production : Finished Goods	Sports & Outdoor Goods	Manchester	
12040 Inventory : WIP	£30.00		Yes			Parent Company : United Kingdom	Production : Finished Goods	Sports & Outdoor Goods	Manchester	
60020 Administration Expenses : Manufacturing Expenses (Machine & Labour)		£45.00	Yes			Parent Company : United Kingdom	Production : Finished Goods	Sports & Outdoor Goods	Manchester	
12040 Inventory : WIP	£45.00		Yes			Parent Company : United Kingdom	Production : Finished Goods	Sports & Outdoor Goods	Manchester	
60020 Administration Expenses : Manufacturing Expenses (Machine & Labour)		£30.00	Yes			Parent Company : United Kingdom	Production : Finished Goods	Sports & Outdoor Goods	Manchester	
12040 Inventory : WIP	£30.00		Yes			Parent Company : United Kingdom	Production : Finished Goods	Sports & Outdoor Goods	Manchester	

TOTAL: 8

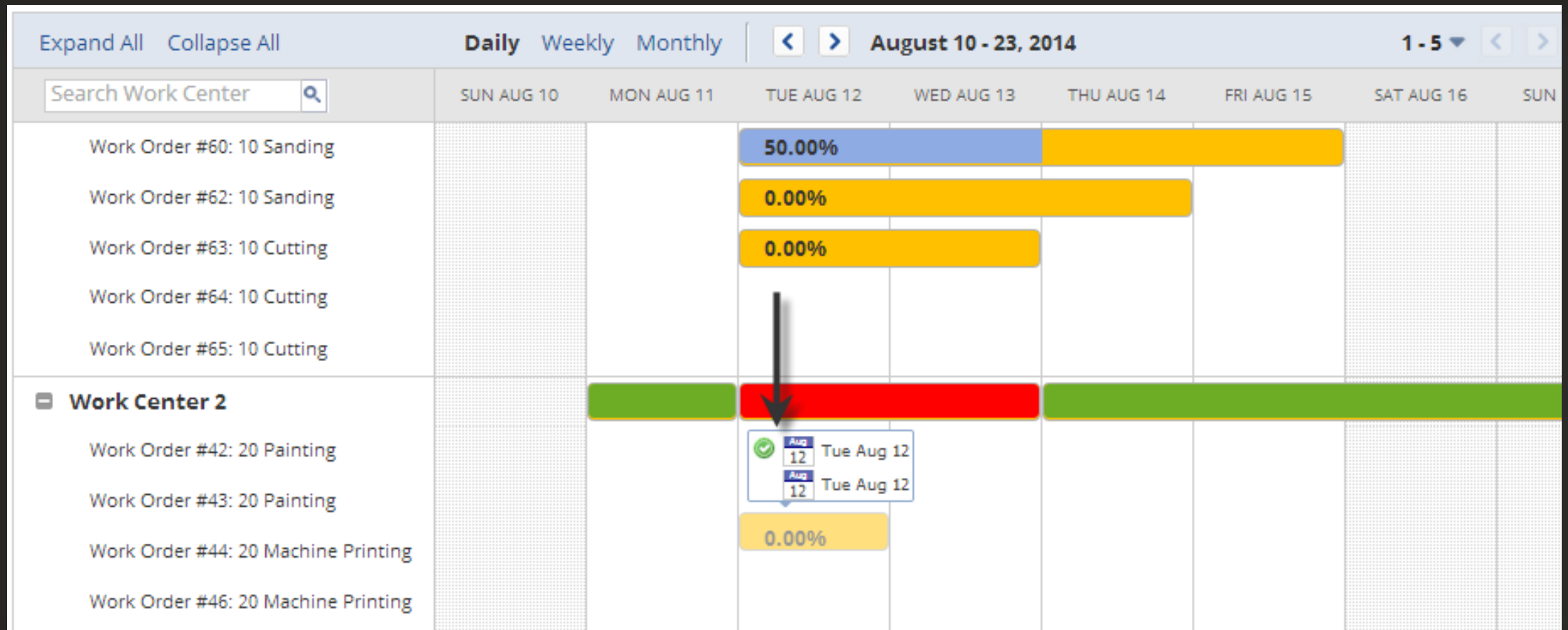
MANUFACTURING TASK SCHEDULER



RESCHEDULING – FORWARD SCHEDULING METHOD



WORK CENTRE REASSIGNMENT



WHAT IT MEANS FOR YOUR PROSPECT

✓ Manufacturing Visibility

- Ability to track where your product is in the manufacturing process
- Ability to see how well we are producing to plan

✓ Work Order Metrics

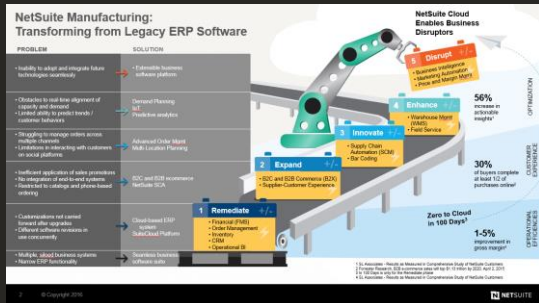
- Labor efficiency
- Scrap tracking
- Production variances and WIP

✓ Additional Reporting

- Online dispatch List
- In process Work orders
- Late Work Orders...



ADVANCED MANUFACTURING



- Track BOM
- Create Shop Floor Tracking Mechanism
- Fixed Lead Time Planning
- Consume Component upon completion and create Finished Good item
- Calculate Finished Good cost from Components

Work in Process and Routings

- + WO and Assemblies
- Routings
- Capture Operational Setup and Run Time
- Variable Lead Time Planning
- Forward/Backward Schedule
- Backflush Material/ Labor or Complete separately
- Cost Collection at Operational Level
- Calculate Finished Good cost from Components and Operations

Work in Process and Routings

- +WO and Assemblies
- +WIP and Routings
- Asset based Work Bench
- Discrete and Batch setup
- Finite based Work Order Scheduling
- Capacity Planning
- Backflush Material/ Labor at Operation used at
- Capture Actual Operational Setup and Run Times as they happen
- Tablet/Scanner for Real Time Work Order Tracking
- Downtime reporting
- In Process Quality

Advanced Manufacturing

ADVANCED MANUFACTURING STRENGTHS



Capacity Planning

Verifies that there is sufficient resource capacity to meet the scheduling requirements



Finite Scheduling

Ensure that work proceeds at an even and efficient pace through the facility



Shop Floor Execution

Allows for the collection of downtime, production loss and production results



Reporting

Shop Floor Information and status in real-time allowing you to make better decisions

COMMON BUSINESS CHALLENGES

UNDERSTANDING YOUR *PROSPECT'S* CHALLENGES

SCHEDULING

Visibility into potential Work Center constraints

Unrealistic production schedules which fail to optimize production capacity

EXECUTION

Shop reporting is done after the fact or ad hoc

Work Center efficiency issues may go unnoticed until too late

REPORTING

Lack of visibility into corporate KPIs around product throughput or resource efficiencies



—

NETSUITE

in action

Capacity Resource Planning

Calculates cumulative work center load and capacity remaining

Capacity Planning Reports More

[Print Report](#) | [Display Plan](#)

Select Report Parameters

CAPACITY PLAN: CE - 1 of 3 MO SELECT REPORT: Work Center Utilization By Period

Work Center Summary

WORK CENTER	UNITS PLANNED	PLANNED LABOR HOURS	LABOR HOURS AVAILABLE	PLANNED LABOR UTILIZATION %	PLANNED MACHINE HOURS	MACHINE HOURS AVAILABLE	PLANNED MACHINE UTILIZATION %
D-Packaging	305.0	20.3	200.0	10.2	10.2	200.0	5.1
P-Blending	3,250.0	32.5	200.0	16.3	35.0	200.0	17.5
P-Inspection	7,350.0	542.4	200.0	271.2	544.2	200.0	272.1
P-Packaging	7,350.0	0.7	200.0	0.3	36.6	200.0	18.3
D-Hand Assembly	305.0	25.5	200.0	12.8	25.7	200.0	12.8
D-Inspection	305.0	25.5	200.0	12.8	25.5	200.0	12.8
P-Baking	4,100.0	4.1	200.0	2.0	2.5	200.0	1.3

[Add](#) [Cancel](#) [Insert](#) [Remove](#)

[Print Report](#) | [Display Plan](#)

Create Rough Cut Capacity Plan

More

Refresh | **Planned Demand** | **Resource Supply** | **Save The Plan**

Capacity Plan

LOCATION: Wimborne | PLAN NAME: Wimborne - November | PLAN TYPE: Work Orders

Planning Horizon

HORIZON START: 30/10/2017 | HORIZON END: 1/12/2017 | TIME FENCE: Week | COMMENTS:

Planned Demand | Resource Supply

Product Demand

ORDER NO	ITEM NO	DESCRIPTION	QUANTITY	PRODUCTION DATE	PLANNING PERIOD
WRK00001731	Cell VIPS - Small	Cell Seeding	1	6/11/2017	6/11/2017
WRK00001730	Cell VIPS - Medium	Cell Seeding	1	3/11/2017	30/10/2017
WRK00001729	Cell VIPS - Large	Cell Seeding	1	1/11/2017	30/10/2017
WRK00001725	Cell Metric - Small	Cell Metric® Imager	1	1/11/2017	30/10/2017
WRK00001724	Cell Metric - Medium	Cell Metric® Imager	1	1/11/2017	30/10/2017
WRK00001723	Cell Metric - Large	Cell Metric® Imager	1	30/10/2017	30/10/2017
WRK00001726	Cell Metric CLD - Large	Cell Metric® CLD Premium with built-in 10 plate loader	1	30/10/2017	30/10/2017
WRK00001727	Cell Metric CLD - Medium	Cell Metric® CLD Premium with built-in 10 plate loader	1	30/10/2017	30/10/2017

Create Rough Cut Capacity Plan

More

Refresh | **Planned Demand** | **Resource Supply** | **Save The Plan**

Capacity Plan

LOCATION: Wimborne | PLAN NAME: Wimborne - November | PLAN TYPE: Work Orders

Planning Horizon

HORIZON START: 30/10/2017 | HORIZON END: 1/12/2017 | TIME FENCE: Week | COMMENTS:

Planned Demand | **Resource Supply**

WORK CENTER	PLANNING PERIOD	STD DAYS	HEAD COUNT	LABOR SHIFT HOURS	TOTAL DAILY LABOR	PERIOD LABOR HOURS	MACHINES	MACHINE SHIFT HOURS	TOTAL DAILY MACHINE	PERIOD MACHINE HOURS
Wimborne - Person A	30/10/2017	5	1	8	8	40	1	8	8	40
Wimborne - Person A	6/11/2017	5	1	8	8	40	1	8	8	40
Wimborne - Person A	13/11/2017	5	1	8	8	40	1	8	8	40
Wimborne - Person A	20/11/2017	5	1	8	8	40	1	8	8	40
Wimborne - Person A	27/11/2017	5	1	8	8	40	1	8	8	40
Wimborne - Person B	30/10/2017	5	1	7.5	7.5	37.5	1	7.5	7.5	37.5
Wimborne - Person	6/11/2017	5	1	7.5	7.5	37.5	1	7.5	7.5	37.5

Planned Production Summary

Location : Wimborne
Horizon : 30/10/2017 To 1/12/2017

Plan Name : Wimborne - November
Report : Planned Work Center Production Summary

Work Center	Period	Planned Units	Planned Labor Hours	Available Labor Hours	Planned Labor Utilization	Planned Machine Hours	Machine Hours Available	Planned Machine Utilization
Wimborne - Person A	30/10/2017	4	5.5	40	13.8	7.5	40	18.8
Wimborne - Person B	30/10/2017	12	35.25	37	95.3	41.25	37	111.5
	6/11/2017	4	5.5	37	14.9	7.5	37	20.3
Wimborne - Person C	30/10/2017	8	18.5	20	92.5	22.5	20	112.5
Wimborne - Person D	30/10/2017	4	14	12	116.7	15	12	125.0

Finite Capacity Scheduling

All critical scheduling information consolidated into one view
Color code status, real-time, reschedule, material availability, production results, downtime, quality, charts, etc.

Work Order Management More

[List Work Orders](#) | [View Contents](#) | [Displays](#) | [Production Data Entry](#)

Planning Horizon

WORK CENTER: HORIZON START: VIEW FORMAT:

JOB STATUS: HORIZON END:

Master Plan | **Work Calendar**

Work Orders • [Mfg Operations](#) | [Material Requirements](#) | [Related Work Orders](#) | [Production Results](#) | [Production Loss](#) | [Equipment Down Time](#) | [Quality Control](#) | [Labor Charges](#)

[View Contents](#)

SELECT	WORK ORDER	ITEM NO	ITEM DESCRIPTION	PLANNING PRIORITY	ORDER START	OP START	DATE DUE	PLANNED QTY	RECORDED QTY	OPEN QTY	▲ % COMPLETE
<input type="checkbox"/>	Work Order #WRK00001513	WRB400S	Activity Wearable Device 400 Black	00 - Rush Order	5/1/2016	5/1/2016	5/5/2016	1.0	0.0	1.0	0.0
<input type="checkbox"/>	Work Order #WRK00001514	WRB400S	Activity Wearable Device 400 Black	01 - Priority Override	5/1/2016	5/1/2016	5/5/2016	3.0	0.0	3.0	0.0
<input type="checkbox"/>	Work Order #WRK00001498	WRB400S	Activity Wearable Device 400 Black	02 - Standard Priority	5/4/2016	5/4/2016	6/18/2016	1.0	1.0	0.0	100.0
<input type="checkbox"/>	Work Order #WRK00001499	WRB400S	Activity Wearable Device 400 Black	02 - Standard Priority	5/4/2016	5/4/2016	6/18/2016	3.0	0.0	3.0	0.0
<input type="checkbox"/>	Work Order #WRK00001500	WRB400S	Activity Wearable Device 400 Black	00 - Rush Order	5/4/2016	5/4/2016	5/20/2016	3.0	2.0	1.0	66.0
<input type="checkbox"/>	Work Order #WRK00001501	WRB400S	Activity Wearable Device 400 Black	03 - Build For Stock	5/4/2016	5/4/2016	5/20/2016	2.0	0.0	2.0	0.0

List Work Orders Preview Schedule Release Work Orders

Display Filters

LOCATION: Wimborne

HORIZON START: 1/12/2017

PLANNED ORDERS: Display All

SORT BY: Planning Code

PRODUCTION CLASS:

HORIZON END: 30/4/2018

RELEASED ORDERS: Use Date Filter

THEN BY: Schedule Code

SPECIFIC WORK ORDER:

Work Order Release Options

SCHEDULE DATE: 1/12/2017

SCHEDULE METHOD: Forward Schedule

CHILD WORK ORDERS: Do Not Release Child Work Orders

RELEASED TO PRODUCTION: Work Order Count = 2 Units Planned = 2

Select Work Orders To Release

Mark All Unmark All Sort Demand

RELEASE	SEQUENCE	WORK ORDER	ITEM NO	DESCRIPTION	QUANTITY	ROUTING	PLANNED START	STATUS	DELIVERY DATE	PLANNING CODE	SCHEDULE CODE	ORDER CODE
<input type="checkbox"/>		WRK00001757	Cell Metric - Medium	Cell Metric® Imager	15	Cell Metric - Medium	15/1/2018	Planned Firm		02 - Standard Priority	0202 (SOL-MET-SOL-MED)	
<input type="checkbox"/>		WRK00001758	Cell Metric - Medium	Cell Metric® Imager	15	Cell Metric - Medium	5/3/2018	Planned Firm		02 - Standard Priority	0202 (SOL-MET-SOL-MED)	
<input type="checkbox"/>		WRK00001760	Cell Metric CLD - Medium	Cell Metric® CLD Premium with built-in 10 plate loader	1	Cell Metric CLD - Medium	14/12/2017	In Process			0102 (SOL-CLD-SOL-MED)	
<input type="checkbox"/>		WRK00001761	Cell Metric CLD - Medium	Cell Metric® CLD Premium with built-in 10 plate loader	1	Cell Metric CLD - Medium	14/12/2017	Closed			0102 (SOL-CLD-SOL-MED)	

List Work Orders Preview Schedule Release Work Orders

List Work Orders Preview Schedule Release Work Orders

Display Filters

LOCATION: Wimborne | HORIZON START: 1/12/2017 | PLANNED ORDERS: Display All | SORT BY: Planning Code | SPECIFIC WORK ORDER: []

PRODUCTION CLASS: [] | HORIZON END: 30/4/2018 | RELEASED ORDERS: Use Date Filter | THEN BY: Schedule Code

Work Order Release Options

SCHEDULE DATE: 1/12/2017 | SCHEDULE METHOD: Forward Schedule | CHILD WORK ORDERS: Do Not Release Child Work Orders | RELEASED TO PRODUCTION: Work Order Count = 2 Units Planned = 2

Select Work Orders To Release

Mark All Unmark All Sort Demand

RELEASE	SEQUENCE	WORK ORDER	ITEM NO	DESCRIPTION	QUANTITY	ROUTING	PLANNED START	STATUS	DELIVERY DATE	PLANNING CODE	SCHEDULE CODE	ORDER CODE ▲
<input checked="" type="checkbox"/>	2	WRK00001757	Cell Metric - Medium	Cell Metric® Imager	15	Cell Metric - Medium	15/1/2018	Planned Firm		02 - Standard Priority	0202 (SOL-MET-SOL-MED)	
<input checked="" type="checkbox"/>	1	WRK00001758	Cell Metric - Medium	Cell Metric® Imager	15	Cell Metric - Medium	5/3/2018	Planned Firm		02 - Standard Priority	0202 (SOL-MET-SOL-MED)	
<input type="checkbox"/>		WRK00001760	Cell Metric CLD - Medium	Cell Metric® CLD Premium with built-in 10 plate loader	1	Cell Metric CLD - Medium	14/12/2017	In Process			0102 (SOL-CLD-SOL-MED)	
<input type="checkbox"/>		WRK00001761	Cell Metric CLD - Medium	Cell Metric® CLD Premium with built-in 10 plate loader	1	Cell Metric CLD - Medium	14/12/2017	Closed			0102 (SOL-CLD-SOL-MED)	

List Work Orders Preview Schedule Release Work Orders

Work Order Management

More

- List Work Orders
- View Contents
- Edit Work Order
- Displays
- Production Data Entry

Planning Horizon

WORK CENTER
 Wimborne - Person C +

JOB STATUS
 All

HORIZON START
 1/12/2017

HORIZON END
 30/12/2017

VIEW FORMAT
 Detail View

Master Plan Work Calendar

- Work Orders*
- Mfg Operations
- Material Requirements
- Related Work Orders
- Production Results
- Production Loss
- Equipment Down Time
- Quality Control
- Labor Charges

View Contents

SELECT	WORK ORDER	ITEM NO	ITEM DESCRIPTION	PLANNING PRIORITY	ORDER START	OP START	DATE DUE	PLANNED QTY	RECORDED QTY	OPEN QTY	% COMPLETE
<input type="checkbox"/>	Work Order #WRK00001758	Cell Metric - Medium	Cell Metric® Imager	02 - Standard Priority	1/12/2017	1/12/2017		15.0	0.0	15.0	0.0
<input type="checkbox"/>	Work Order #WRK00001760	Cell Metric CLD - Medium	Cell Metric® CLD Premium with built-in 10 plate loader		14/12/2017	14/12/2017		1.0	1.0	0.0	100.0
<input type="checkbox"/>	Work Order #WRK00001761	Cell Metric CLD - Medium	Cell Metric® CLD Premium with built-in 10 plate loader		14/12/2017	14/12/2017		1.0	1.0	0.0	100.0
<input type="checkbox"/>	Work Order #WRK00001759	Cell Metric - Medium	Cell Metric® Imager	00 - Rush Order	27/11/2017	18/12/2017		15.0	5.0	10.0	33.0

- List Work Orders
- View Contents
- Edit Work Order
- Displays
- Production Data Entry

WORK CENTER Wimborne - Person C JOB STATUS All

HORIZON START 1/12/2017 HORIZON END 30/12/2017

VIEW FORMAT Detail View

Machines Labor

1 to 25 of 33

Table with 7 columns representing dates from 12/1/2017 to 12/7/2017. Each column shows planned and available hours, utilization status (e.g., 100.0% Util), and work order details for 'Cell Metric - Medium'.

Gantt Chart Scheduling

- Gantt Chart View (non Interactive!)
- Color coded to easily track work orders
- Pop-up views provide detailed information

Production Planning Reports

Display Report | Go Back

Planning Horizon

SELECT CHART: Entire Plant - Group By Work Center

DEPARTMENT: []

WORK CENTER: D-Hand Assembly

HORIZON START: 5/1/2016

HORIZON END: 6/30/2016

WORK ORDER: []

SELECT STATUS: All Work Orders

Planned Production

Activity	Work Order #	Start	End
P-Blending	Work Order #WRK00000771	5/1/2016	5/15/2016
P-Packaging	Work Order #WRK00000771	5/1/2016	5/15/2016
P-Inspection	Work Order #WRK00001307	5/1/2016	5/15/2016
P-Inspection	Work Order #WRK00000770	5/15/2016	6/15/2016
P-Inspection	Work Order #WRK00000772	6/17/2016	7/15/2016
P-Inspection	Work Order #WRK00001089	6/17/2016	7/15/2016
P-Inspection	Work Order #WRK00001312	6/17/2016	7/15/2016
P-Inspection	Work Order #WRK00000826	6/17/2016	7/15/2016
P-Inspection	Work Order #WRK00000771	6/17/2016	7/15/2016

Work Order #WRK00000772

- Work Order #WRK00000772
- P-Inspection: Jun 17 - Jul 15, 2016
- Duration: 28 days

SHOP FLOOR EXECUTION – Touch Pad Tablet

Active Run in
'Green'

Sequenced
based on Finite
Shop Floor
Schedule

Easy Menu
Items

NETSUITE
FOR MANUFACTURERS

Work Queue

WORK CENTER: DAN Big Jars Ln 1 [Clear] [List] START DATE: 03/28/2016 [Select] END DATE: 04/08/2016 [Select]

PLANNED START	ITEM	WORK ORDER	OPERATION	ORDERED	PRODUCED
03/31/2016	DAN 4004	WRK00000717	110	900	1455
04/01/2016	DAN 4004	WRK00000722	110	900	402
03/28/2016	DAN 4004	WRK00000724	110	1800	770
03/29/2016	DAN 4004	WRK00000725	110	900	460
04/04/2016	DAN 4004	WRK00000727	110	900	
04/05/2016	DAN 4004	WRK00000728	110	200	
04/07/2016	DAN 4004	WRK00000730	110	500	



Work Queue

WORK CENTER:

START DATE:

END DATE:

QUICK SEARCH:

PLANNED START	ITEM	WORK ORDER	OPERATION	ORDERED	PRODUCED	PLANNER	PRIORITY	STATUS
1/12/2017 9:00 am	Cell Metric - Medium	WRK00001758	10	15		Stonelake	02 - Standard Priority	
12/12/2017 2:00 pm	Cell Metric - Medium	WRK00001758	30	15		Stonelake	02 - Standard Priority	
4/12/2017 4:30 pm	Cell Metric - Medium	WRK00001758	20	15		Stonelake	02 - Standard Priority	
1/12/2017 12:00 am	Cell Metric - Medium	WRK00001759	30	15	5	Stonelake	00 - Rush Order	
14/12/2017 12:00 am	Cell Metric CLD - Medium	WRK00001760	40	1	1	Stonelake	- None -	
14/12/2017 12:00 am	Cell Metric CLD - Medium	WRK00001760	10	1	1	Stonelake	- None -	
14/12/2017 12:00 am	Cell Metric CLD - Medium	WRK00001760	30	1	1	Stonelake	- None -	
14/12/2017 12:00 am	Cell Metric CLD - Medium	WRK00001760	20	1	1	Stonelake	- None -	



Wimborne - Person C



Work Order - WRK00001758

Operation - 20

Item - Cell Metric - Medium

Start



PRODUCTION

Enter Production - 0 / 15

MATERIAL ISSUE

LCD015	MNB001	MNC001
PCB005	- Empty -	- Other -

SCRAP

Calibration Failure	Electrical Damage	Empty
Machine Loss	Partial Barrel	- Other -

DOWNTIME

Late Maintenance	Machine Breakdown	Maintenance
------------------	-------------------	-------------



Wimborne - Person C

Work Order - WRK00001758

Operation - 20

Item - Cell Metric - Medium

Stop - 00:00 Started - 19/12/2017 3:01 pm Current - 19/12/2017 3:01 pm ⓘ

PRODUCTION

Enter Production - 0 / 15

MATERIAL ISSUE

LCD015	MNB001	MNC001
PCB005	- Empty -	- Other -

SCRAP

Calibration Failure	Electrical Damage	Empty
Machine Loss	Partial Barrel	- Other -

DOWNTIME

Late Maintenance	Machine Breakdown	Maintenance
------------------	-------------------	-------------

WHAT IT MEANS FOR YOUR PROSPECT

✓ Real Time Information

- Integrated Data Collection
- Near real time visibility of Inventory
- Mobile interface allows for immediate insight into ongoing production activities

✓ Visibility into Critical Metrics

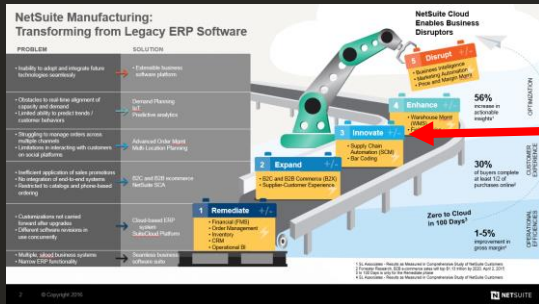
- Insight into Resource capacity prior to schedule
- Alert to inefficient metrics or unexpected downtime
- Create realistic schedule based on capacity

✓ Additional Reporting

- 40+ additional reports/KPI's for your use



ADVANCED MANUFACTURING – (PHASE ONE?)



- Track BOM
- Create Shop Floor Tracking Mechanism
- Fixed Lead Time Planning
- Consume Component upon completion and create Finished Good item
- Calculate Finished Good cost from Components

Work Orders and Assembly

- + WO and Assemblies
- Routings
- Capture Operational Setup and Run Time
- Variable Lead Time Planning
- Forward/Backward Schedule
- Backflush Material/ Labor or Complete separately
- Cost Collection at Operational Level
- Calculate Finished Good cost from Components and Operations

Work in Process and Routings

- +WO and Assemblies
- +WIP and Routings
- Asset based Work Bench
- Discrete and Batch setup
- Finite based Work Order Scheduling
- Capacity Planning
- Backflush Material/ Labor at Operation used at
- Capture Actual Operational Setup and Run Times as they happen
- Tablet/Scanner for Real Time Work Order Tracking
- Downtime reporting
- In Process Quality

Advanced Manufacturing

Learning Cloud Support

The screenshot displays the Oracle NetSuite Learning Portal interface. At the top left, the Oracle NetSuite logo is visible next to the text 'Learning Portal'. A search bar is located in the top right corner. Below the header, a blue banner reads 'Welcome'. The main content area features a 'Welcome' section with a description of the portal and a 'Login' button. A 'Global Search' modal is open, showing search results for 'Manufacturing'. The search results list three training courses: 'Manufacturing: Fundamentals', 'Advanced Manufacturing Enablement Series', and 'Advanced Manufacturing Enablement Series for Sales'. Each result includes a curriculum icon, a star rating, and a brief description.

ORACLE NETSUITE Learning Portal

Welcome

Search

Global Search

Manufacturing

Search

Refine search

Training results (13)

Manufacturing: Fundamentals
Curriculum | SuiteTraining ★★★★★ (7)
This 3-day course introduces the essential concepts of NetSuite's **Manufacturing** solution while teaching the critical skills needed to set up, plan, and execute business process operations in NetSuite.

Advanced Manufacturing Enablement Series
Curriculum | NetSuite (Online Provider) ★★★★★ (11)
Course designed to introduce and train the User in the configuration and use of the Advanced **Manufacturing** Module functionality.

Advanced Manufacturing Enablement Series for Sales
Curriculum | NetSuite (Online Provider) ★★★★★ (1)
7-Module Course designed to introduce and orient the Sales Rep to the Advanced **Manufacturing** Module functionality.

Powered by Cornerstone OnDemand, Inc.

The background features a dark, textured field with various organic, flowing shapes in shades of blue, brown, and cream. Some shapes have intricate line patterns, such as concentric circles or wavy lines, while others are solid or have a speckled texture. The overall composition is layered and artistic.

Thank You